



# MHRS

## Manukau Harbour Restoration Society



Photo of Tuna Boats, Cornwallis by Bronwen Turner

## WAIUKU DISCHARGE CONSENT

Watercare has been granted a 35 year resource consent (plus 8 years for planning and construction) to discharge treated effluent into the Waiuku channel at Clarks Beach. MHRS appealed the decision and as a result the conditions of the consent have been strengthened considerably.

Watercare applied for the consent in 2016. The effluent is to come from a rebuilt wastewater treatment plant at Waiuku that would serve growth in Waiuku, Clarks Beach and Kingseat. Consistent with our long standing policy of opposing further urban discharges into the harbour, MHRS did not support Watercare's application to discharge into the Waiuku channel. We support the proposal to treat wastewater of the larger area at an expanded Waiuku plant, but believe there are alternatives to disposing of the treated effluent into the harbour.

Over the last two years through the consenting process, MHRS has been working with Watercare and has made significant improvements to the effluent standards and operating conditions that must be met.

MHRS achieved some significant improvements to the role and representation of the Community Liaison Group (CLG), strengthened Conditions and improved and lengthened the duration of the monitoring program. For instance all the professionals preparing the various required reports will be available to work with the CLG; the CLG will have access to more of the raw data; a study of industrial reuse options of the discharge is now required; the effects of discharge on Total Phosphorous and Total Nitrogen concentrations in the receiving environment and relationship of Total Phosphorous and Total Nitrogen to limiting algal growth will be addressed in the 5-yearly Monitoring and Technology Review Reports; Council will have the ability to impose a limit on Phosphorus; monitoring data that will be collected is expanded; an Emerging Contaminants Risk Assessment required; and the length of time the discharge can take place each tide is limited.

## South-West Wastewater Servicing Project - Best Practicable Option



## ONEHUNGA WHARF ACQUISITION

Purchase of the Port of Onehunga by Auckland Council/Panuku has been announced. Since its inception MHRS has called for a major upgrade of the wharf's infrastructure. Our vision is for an active functioning wharf where the fishing industry is the major tenant. The wharf is a vital facility through which the fishing companies bring 50% of their annual inshore catches. They have no alternative. We see the potential for public facilities such as a wet fish market serving West and South Auckland, ferries and water taxis, recreation boat access and moorings, maritime activities supporting local jobs and job training, museums and other visitor facilities. Granville Island in Vancouver is a hugely successful model for us to learn from. We do not support the development of housing as it poses reverse sensitivity impacts on the fishing industry and the port does not have an aspect conducive for housing. We recommend housing be developed within Onehunga proper.

**To read Panuku's media release click here :**

<https://www.panuku.co.nz/onehunga-wharf-purchase>





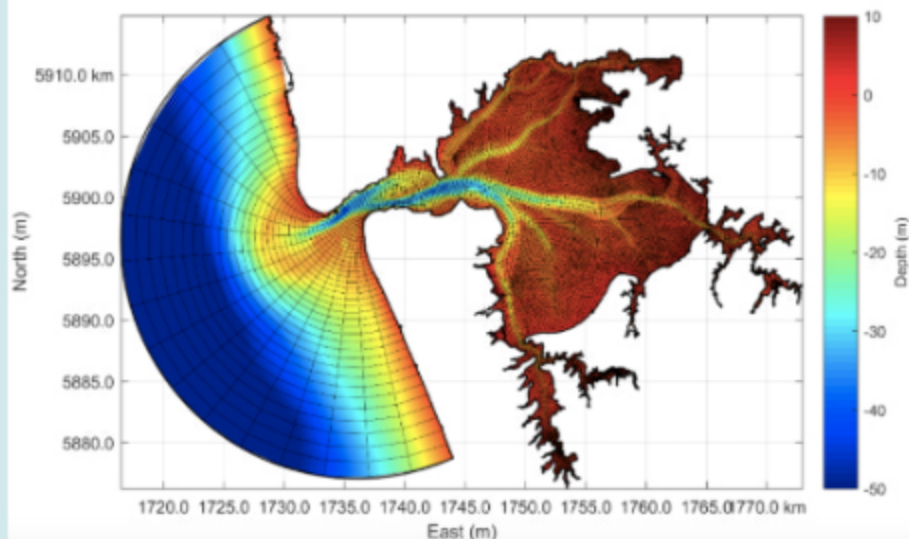
## HYDRODYNAMIC MODELLING

Watercare is proceeding with building the hydrodynamic model of the harbour. NIWA is the primary contractor which has built the model and is now calibrating it based on real time data collected from monitoring buoys.

MHRS is pleased Watercare has committed to spending time demonstrating the model with stakeholders so we can understand its capabilities and limitations. Watercare anticipates this will happen early next year.

MHRS is also pleased to learn from Andrew Chin, Auckland Council Healthy Waters, that the stormwater catchment model being developed by his team will be integrated with the hydrodynamic model allowing model runs which will show sediment and contaminant movement in the harbour. This commitment was made by Craig McIlroy (Auckland Council Healthy Waters) at the Manukau Harbour Symposium in 2016.

### Hydrodynamic Model



## BIG BLUE WAITAKERE

The Waitakere Ranges Local Board released a baseline study in June of the West Coast and Manukau foreshore within the WRLB area. You can find the study here:

<http://www.knowledgeauckland.org.nz/assets/publications/Big-blue-Waitakere-report-Waitakere-Ranges-Local-Board-April-2018.pdf>

MHRS considers this to be a good starting point of data on the harbour's environmental condition. However, there are serious shortcomings in the report, particularly concerning water quality, recreation use of the harbour and the inadequacy of infrastructure to support access and use of the harbour. This is becoming critical as Auckland's population expands quickly and many more people want to enjoy the harbour. We hope WRLB will address this by making the first implementation step talking with local environmental and recreation groups active in the board area to verify information in the study and flesh out recreation and access recommendations in the study.

Photo: OKE Head to Head race (Awhitu to Huia)



## CENTRAL ISTHMUS STORMWATER AND CENTRAL INTERCEPTOR

Once operational, the Central Interceptor (CI) should significantly reduce the combined stormwater overflows on the Central Isthmus that now flow into the Waitemata. MHRS has been working with a group of Central Isthmus neighbourhoods to ensure Council uses funds from the targeted water quality rate to separate as much of the existing combined stormwater/wastewater system as is possible. This project is called the Western Isthmus Water Quality Improvement Project. This will not only reduce overflows into the harbour but also reduce flows to the Mangere Wastewater Treatment Plant.

The swimmability at beaches of the Onehunga Foreshore (Taumanu) is to improve as a result of the Central Interceptor, although timing of those improvements is dependent upon the sequencing of CI construction.





## MONITORING WATER QUALITY AT ONEHUNGA LAGOON

Kerry Martin has been doing water quality testing for Healthy Waters and says the lagoon is a 'unique' environment as it can be flushed out after heavy rain, via the sluice gates. He says testing already shows flushing the water after big rain events cleans the water faster. Kerry is hoping that water testing data might convince Auckland Council to reduce the heavy rain stand-down clause to 24 hours instead 48 hours, allowing all users, including dogs, more access to the lagoon. He hopes this model of community members' involvement in water quality monitoring can be repeated throughout the Manukau Harbour.

Article & photo from the Onehunga Community News





## AUCKLAND COUNCIL'S SAFE SWIM PROGRAM

The Safe Swim program last summer drew public attention to poor water quality at a number of Manukau Harbour beaches including Foster Bay, Armour Bay, Laingholm, Titirangi Beach, Wood Bay, Green Bay and Taumanu East on the northern shores as well as Weymouth and Clarks Beach.

Residents at Laingholm have mobilized to investigate the sources of pollution at Laingholm and are working with Watercare and Auckland Council to eliminate human wastewater inflows. The Healthy Waters Team at Auckland Council are using funds from the water quality targeted rate to make it their priority to investigate the causes of poor swimmability at the northern foreshore beaches. Permanent “no swim” warnings remain at Clarks Beach and Weymouth. On a more positive note, Waikowhai and Cornwallis beaches were listed as among Auckland’s cleanest.

Photo: View down to Laingholm Beach, Leonie Norton



## MOORINGS IN THE MANUKAU

Over the past 5 months, Jim Jackson, MHRS Chair has been seeking resource consent from Auckland Council to install moorings at several locations in the Manukau Harbour including at Onehunga and Clarks Beach. The moorings would be used by the Aotea Sea Scouts, Manukau Cruising Club and a research vessel to educate people on the importance of water quality, marine and bird life on the harbour. The vessel would be available to allow volunteers from harbour interest groups to gather sediment and water quality data. MHRS envisions this as part of a long-term monitoring program that hopefully will result in improvement in the harbour's birdlife and marine life.

Photo: Jim Jackson Collection



## **AOTEA SEA SCOUTS – by Stephen Lasham, Scout Leader**

The Auckland Unitary Plan is a massive complicated document of rules and directives, maps and plans, set in place by Auckland Council. The impacts of the plan are far and wide and what could be seen as a benefit to some has turned out to be a major issue for others. Gloucester Park was designated as an outstanding natural feature and it wasn't until the East West Link proposal that the full impact of this designation was realised.

Ever since the Manukau Motorway closed off the waterfront along Beachcroft Avenue in the 1960's, community groups have campaigned for the restoration of the Onehunga waterfront. Phase 1 of this restoration was realised in 2015 with the opening of the award winning Taumanu Reserve. Phase 2 was to connect Taumanu Reserve to the Port of Onehunga.

The East West Link project was seen as a major driver, but the NZTA's hands were tied; they could not include a restorative reclamation in their plans due to the outstanding natural feature (ONF) designation on Gloucester Park. Instead their plans placed a six meter high causeway directly outside the home of Aotea Sea Scouts, and further degraded the coastline along Onehunga Harbour Road. Negotiations proved fruitless and eventually the Environmental Court ruled that the EWL could proceed, regardless of the negative impact on the Onehunga coastal environment.

Then came the election. Labour got in and the plan for the East West Link was placed on-hold - on-hold, not cancelled. The East West Link has not gone away, it is just sleeping awaiting another change of government.



Aotea Sea Scouts ran a petition for a restorative reclamation and submitted it to Government. A Select Committee meeting heard commentary and the committee was implored to take action. The Minister for Conservation was invited to come and talk, but declined. Discussions were also held with Panuku, since a reclamation would greatly complement their goal of turning the Port of Onehunga into a mixed commercial and recreational space. Rather than a reclamation however, Panuku proposed a boardwalk, hardly a satisfactory alternative.

While the outstanding natural feature designation is in place, no one can take sensible steps to restoring the coastline, and boy does it need restoring! The stretch of coastline outside Aotea Sea Scouts is a disgrace. Mud from sedimentation is now over 70 cm deep and what little beachfront that exists is littered with rubble and is hardly outstanding. When the East West Link goes in, the causeway will dominate the environment with concrete and traffic noise, and the wall will be a target for graffiti. What little pleasing aesthetics this stretch of coastline currently has will be totally destroyed.

It needs to change. A restorative reclamation will shield the foreshore from the motorway, it will reduce the noise, and enable people to enjoy their waterfront. It will enable the completion of the cycleway between Ambury Farm and Hillsborough. It will introduce new wildlife habitats with plantings of native trees and ground plants. Water quality will improve as mud is removed and used in the reclamation, and all tide swimming will be possible with the beaches being that much closer to the channel. However, Auckland Council has told Sea Scouts it must initiate a private plan change to alter the ONF designation. The initial cost for filing a plan change? \$30,000. That is completely beyond the resources of Sea Scouts.

Onehunga is growing, our recreational spaces are diminishing, and our one natural resource, the Manukau, is being negatively impacted at every opportunity. It is time to say "no more", it is time for change.



Photo: Kerry Martin



## WEYMOUTH NEWS

Over the last few months Watercare has addressed problems with four overflows of sewage into the walkway behind the Waimahia Inlet Development in Weymouth which flow into the Waimahia Estuary. While two overflows were relatively light the others left large amounts of recognizable sewage solids in the walkway. Nearby residents appreciate that Watercare was quick to respond to all overflows and as a result the overflow of sewage from both manholes has been managed effectively.



## CLARKS BEACH NEWS

MHRS has been approached by the Clarks Beach Community to determine the viability of a public jetty and small marina to be located in the protected bay with all-tide deep water behind the Clarks Beach Yacht Club. MHRS has commissioned a planner to determine if any planning barriers could be expected in Auckland Council's Unitary Plan process.

If a consent to build such a structure at Clarks Beach is granted and a small floating dock is provided at the Port of Onehunga, it would allow a ferry operator to pioneer a service on the harbour. The close proximity of both the Onehunga railway station and the Onehunga bus terminal to the Port of Onehunga would provide a seamless public transport connection from Onehunga to the Britomart Station in Downtown Auckland and better utilise the local bus services to the Auckland Airport.

With the growing population of Clarks Beach, Waiuku, Kingseat and Glenbrook this could be an alternative transport solution that reduces demand on the local roading network.

Photo Jim Jackson Collection





## TRANSPOWER

Transpower recently released a document Auckland Strategy Direction outlining Transpower's plans to provide power to Auckland in the future. This document looks at how Auckland is changing, especially its roading networks, housing, technology, industry and use of electricity. Transpower is developing its long-term strategy to support Auckland's growth and its changing environment and is developing a vision for the future. Undergrounding is one of the long-term options being considered by Transpower to transfer electricity through the highly congested Auckland Central Isthmus. This is an option supported by MHRS and communities affected by overhead transmission lines.

While costs of undergrounding are higher it would provide better utilisation of the land under Transpower's lines, supporting Auckland Council's desire to make Auckland a more compact city, and would have a long life expectancy. Transpower's three lines through Onehunga and along the harbour shoreline age between 60 years and 75 years and at some stage will require replacement or upgrading.





## MHRS MEMBER TRIBUTE

It's with sadness that I have to report that Bill Kirk a long-time supporter and member of both TOES and MHRS peacefully passed away at his Mangere Bridge home. Bill will be remembered by many people for the contribution he made not only to the Mangere Bridge community and aviation but our wider community, as a Manukau City Councillor and of course, the Manukau Harbour especially about water quality and sediment issues. One of Bill's passions was the Mangere Bridge All Tide ramp which is seen today as the starting point of a long term generational change process where you can launch and retrieve trailer boats at all stages of the tide. This has taken years and much support especially Bill's to achieve.

We also extend our sympathy to Bill's family who have lost a father and grandfather and a gentleman who made a serious lifetime contribution to making our society better. They should be very proud of him.

Regards

Jim Jackson

Chairman

Manukau Harbour Restoration Society

## **MHRS AGM**

**MONDAY 27 AUGUST AT 7:00 PM**

**Please join us at the MHRS AGM which will be held at The Landing Hotel, 7:00pm on Monday 27th August .** This is a friendly reminder that in order to vote at the AGM you must be a current member. Please would you renew your membership? You can do this on the website [mhers.org.nz](http://mhers.org.nz) or by sending a cheque for your subscription to: MHRS PO Box 13273 Onehunga Auckland 1643

**Membership levels are:**

<b>Individual</b>	<b>\$10</b>
<b>Family</b>	<b>\$20</b>
<b>Corporate</b>	<b>\$200</b>

**We appreciate your continued support. Among other things it allows us to retain expert help for complex issues such as resource consents. Thank you!**